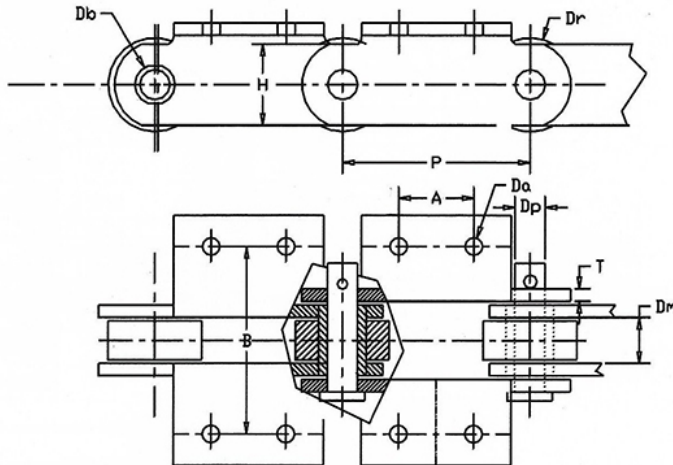


CANE CARRIER CHAIN



Note :

1. Minimum Breaking load given are applicable only for chain using material specified in IS : 8465-1977
2. Attachment dimensions will be as per user's specifications.

Cat No.	Pitch (P)	Breaking Load	Diameter Pin(D_p)	Diameter Roller(D_r)	Distance B/W Links (D_m)	Link Width (H)	Thickness of Link (T)
RB 521	150mm	35,000	23.00	70.0	35.0	60.0	10.0
RB 522	150mm	45,000	25.00	75.0	36.0	65.0	12.0
RB 523	152.4mm	30,000	22.20	70.0	35.0	60.0	10.0
RB 524	152.4mm	45,000	25.40	75.0	36.0	65.0	12.0

*all unspecified dimensions in mm